



Gymo AS  
Tlf: (+47) 40 00 35 22  
E-post: post@gymo.no  
Internett: www.gymo.no

# 67



<b>Drug &amp; Medicine Cabinets</b>	<b>68</b>
<b>Abloy® CLIQ™ Remote</b>	<b>75</b>
<b>Controlled Drug Cabinets</b>	<b>76</b>
<b>Drug &amp; Medicine Cupboards</b>	<b>78</b>
<b>Self Administration Cabinets</b>	<b>80</b>

# DRUG & MEDICINE STORAGE



PC085



LED illuminates green when door is closed



LED illuminates red when door is open, flashes red when open for 2 1/2 minutes

## Drug & Medicine Cabinets - Single Door, Standard Shelves & Door Shelves

### Features

- Independently tested to BS2881: 1989 (Security Level One) Specification for Cupboards for the Storage of Medicines in Health Care Premises
- BS3621 anti pick and drill, key retaining five pin cylinder lock (supplied with 3 keys)
- Adjustable & removable standard shelves (190mm deep) and door shelves (75mm deep)
- Key profile unique to Hospital Metalcraft Ltd, offering 250,000 differs per profile
- Compatible with ABLOY® CLIQ™ Remote, integrating electronics into high security mechanical disc cylinders and keys, combining electronic security and remote management in real time
- 12v DC LED lighting /warning system (model dependent) with volt-free contact to allow connection to light /nurse call systems, CE marked and conforms to the low voltage directives 73 /23/EEC & 89/336/EC
- Lighting transformer casing adds 105mm to overall height (model dependent)
- 0.9mm mild steel welded construction
- Mounting holes provided in back (fixings not included)
- Modular design allows for easy interchange with HTM 63 storage systems
- Compatible with our range of CD cabinets for the storage of Controlled Drugs (see table)

### Standard Colours

- Paint - White

### Options

- Digital Locking
- Sloping Top

See Page 74 For Options



PC090

Dimensions ( w x d x h)	Weight	Shelves /Door Shelves	Right Hand Opening		Left Hand Opening		Compatible CD Cabinets
			With Light*	Without Light	With Light*	Without Light	
500 x 300 x 600mm	29.9kg	3/3	PC015	PC020	PC250	PC255	CD005, CD010
600 x 300 x 600mm	33.9kg	3/3	PC085	PC090	PC310	PC315	CD005, CD010
500 x 300 x 900mm	34.0kg	4/4	PC055	PC060	PC280	PC285	CD005, CD010, CD015
600 x 300 x 900mm	38.0kg	4/4	PC105	PC110	PC330	PC335	CD005, CD010, CD015

\* Transformer casing adds 105mm to overall height

Drug & Medicine Cabinets - Single Door, Deep Shelves

Features

- Independently tested to BS2881: 1989 (Security Level One) Specification for Cupboards for the Storage of Medicines in Health Care Premises
- BS3621 anti pick and drill, key retaining five pin cylinder lock (supplied with 3 keys)
- Adjustable & removable deep shelves (250mm deep)
- Key profile unique to Hospital Metalcraft Ltd, offering 250,000 differs per profile
- Compatible with ABLOY® CLIQ™ Remote, integrating electronics into high security mechanical disc cylinders and keys, combining electronic security and remote management in real time
- 12v DC LED lighting / warning system (model dependent) with volt-free contact to allow connection to light/nurse call systems, CE marked and conforms to the low voltage directives 73/23/EEC & 89/336/EC
- Lighting transformer casing adds 105mm to overall height (model dependent)
- 0.9mm mild steel welded construction
- Mounting holes provided in back (fixings not included)
- Modular design allows for easy interchange with HTM 63 storage systems
- Accepts Nomad® cassettes (see table for capacity)
- Compatible with our range of CD cabinets for the storage of Controlled Drugs (see table)

Standard Colours

- Paint - White

Options

- Digital Locking
- Sloping Top

See Page 74  
For Options



PC120

BS 2881:1989



BS 3621



ABLOY PROTEC  
Remote ready. See page 75



LED illuminates green when door is closed



LED illuminates red when door is open, flashes red when open for 2 ½ minutes



PC115

Dimensions ( w x d x h )	Weight	Shelves	Nomad® Cassette Capacity	Right Hand Opening		Left Hand Opening		Compatible CD Cabinets
				With Light*	Without Light	With Light*	Without Light	
300 x 300 x 600mm	16.9kg	3	13	PC005	PC010	PC240	PC245	CD005
500 x 300 x 600mm	29.9kg	3	24	PC025	PC030	PC260	PC265	CD005, CD010
600 x 300 x 600mm	33.9kg	3	32	PC095	PC100	PC320	PC325	CD005, CD010
500 x 300 x 900mm	34.9kg	4	35	PC065	PC070	PC290	PC295	CD005, CD010, CD015
600 x 300 x 900mm	38.9kg	4	44	PC115	PC120	PC340	PC345	CD005, CD010, CD015

\* Transformer casing adds 105mm to overall height



PC135



LED illuminates green when door is closed



LED illuminates red when door is open, flashes red when open for 2 1/2 minutes

# Drug & Medicine Cabinets - Double Door, Standard Shelves & Door Shelves

## Features

- Independently tested to BS2881: 1989 (Security Level One) Specification for Cupboards for the Storage of Medicines in Health Care Premises
- BS3621 anti pick and drill, key retaining five pin cylinder lock supplied with 3 keys)
- Adjustable & removable standard shelves (190mm deep) and door shelves (75mm deep)
- Key profile unique to Hospital Metalcraft Ltd, offering 250,000 differs per profile
- Compatible with ABLOY® CLIQ™ Remote, integrating electronics into high security mechanical disc cylinders and keys, combining electronic security and remote management in real time
- 12v DC LED lighting /warning system (model dependent) with volt-free contact to allow connection to light /nurse call systems, CE marked and conforms to the low voltage directives 73 /23 /EEC & 89 /336 /EC
- Lighting transformer casing adds 105mm to overall height (model dependent)
- 0.9mm mild steel welded construction
- Mounting holes provided in back (fixings not included)
- Modular design allows for easy interchange with HTM 63 storage systems
- Compatible with our range of CD cabinets for the storage of Controlled Drugs (see table)

## Standard Colours

- Paint - White

## Options

- Digital Locking
- Sloping Top

See Page 74 For Options



PC140

Dimensions ( w x d x h )	Weight	Shelves /Door Shelves	Single Lock (Secures Both Doors)		Each Door Fitted With A Lock		Compatible CD Cabinets
			With Light*	Without Light	With Light*	Without Light	
800 x 300 x 600mm	40.9kg	6/5	PC135	PC140	PC360	PC365	CD005, CD010**
1000 x 300 x 600mm	48.9kg	6/6	PC175	PC180	PC400	PC405	CD005, CD010
800 x 300 x 900mm	45.9kg	8/8	PC155	PC160	PC380	PC385	CD005, CD010, CD015
1000 x 300 x 900mm	53.9kg	8/8	PC195	PC200	PC420	PC425	CD005, CD010, CD015

\* Transformer casing adds 105mm to overall height \*\* CD010 not compatible with PC360 & PC365

Drug & Medicine Cabinets - Double Door, Deep Shelves

Features

- Independently tested to BS2881: 1989 (Security Level One) Specification for Cupboards for the Storage of Medicines in Health Care Premises
- BS3621 anti pick and drill, key retaining five pin cylinder lock (supplied with 3 keys)
- Adjustable & removable deep shelves (250mm deep)
- Key profile unique to Hospital Metalcraft Ltd, offering 250,000 differs per profile
- Compatible with ABLOY® CLIQ™ Remote, integrating electronics into high security mechanical disc cylinders and keys, combining electronic security and remote management in real time
- 12v DC LED lighting / warning system (model dependent) with volt-free contact to allow connection to light /nurse call systems, CE marked and conforms to the low voltage directives 73 /23/EEC & 89 /336/EC
- Lighting transformer casing adds 105mm to overall height (model dependent)
- 0.9mm mild steel welded construction
- Mounting holes provided in back (fixings not included)
- Modular design allows for easy interchange with HTM 63 storage systems
- Accepts Nomad® cassettes (see table for capacity)
- Compatible with our range of CD cabinets for the storage of Controlled Drugs (see table)

Standard Colours

- Paint - White

Options

- Digital Locking
- Sloping Top

See Page 74  
For Options



PC170

BS 2881:1989



BS 3621



ABLOY PROTEC  
Remote ready. See page 75



LED illuminates green  
when door is closed



LED illuminates red when  
door is open, flashes  
red when open for 2 ½  
minutes



PC165

Dimensions ( w x d x h )	Weight	Shelves	Nomad® Cassette Capacity	Single Lock (Secures Both Doors)		Each Door Fitted With A Lock		Compatible CD Cabinets
				With Light *	Without Light	With Light *	Without Light	
800 x 300 x 600mm	40.9kg	8		PC145	PC150	PC370	PC375	CD005, CD010**
1000 x 300 x 600mm	48.9kg	8	58	PC185	PC190	PC410	PC415	CD005, CD010
800 x 300 x 900mm	45.9kg	8		PC165	PC170	PC390	PC395	CD005, CD010, CD015
1000 x 300 x 900mm	53.9kg	8	80	PC205	PC210	PC430	PC435	CD005, CD010, CD015

\* Transformer casing adds 105mm to overall height \*\* CD010 not compatible with PC370 & PC375





PC045

BS 2881:1989



BS 3621

**ABLOY PROTEC**

Remote ready. See page 75



LED illuminates green when door is closed



LED illuminates red when door is open, flashes red when open for 2 ½ minutes

## Single Door

Overall Dimensions (w x d x h)	Weight	MDS Frame Capacity	Right Hand Opening		Left Hand Opening	
			With Light*	Without Light	With Light*	Without Light
500 x 300 x 600mm	26.9kg	2	PC045	PC050	PC270	PC275
500 x 300 x 900mm	31.4kg	4	PC075	PC080	PC300	PC305
600 x 300 x 900mm	35.2kg	6	PC125	PC130	PC350	PC355

\* Transformer casing adds 105mm to overall height of cabinet

## Double Door

Overall Dimensions (w x d x h)	Weight	MDS Frame Capacity	Single Lock (Secures Both Doors)		Each Door Fitted With A Lock	
			With Light*	Without Light	With Light*	Without Light
1000 x 300 x 900mm	26.9kg	8	PC215	PC220	PC440	PC445

\* Transformer casing adds 105mm to overall height of cabinet

## Drug & Medicine Cabinets - Monitored Dosage, MDS Frames

### Features

- Independently tested to BS2881: 1989 (Security Level One) Specification for Cupboards for the Storage of Medicines in Health Care Premises
- BS3621 anti pick and drill, key retaining five pin cylinder lock (supplied with 3 keys)
- Hooks for the storage of blister pack monitored dosage system frames (MDS)
- Key profile unique to Hospital Metalcraft Ltd, offering 250,000 differs per profile
- Compatible with ABLOY® CLIQ™ Remote, integrating electronics into high security mechanical disc cylinders and keys, combining electronic security and remote management in real time
- 12v DC LED lighting / warning system (model dependent) with volt-free contact to allow connection to light / nurse call systems, CE marked and conforms to the low voltage directives 73/23/EEC & 89/336/EC
- Lighting transformer casing adds 105mm to overall height (model dependent)
- 0.9mm mild steel welded construction
- Mounting holes provided in back (fixings not included)
- Modular design allows for easy interchange with HTM 63 storage systems

### Standard Colours

- Paint - White

### Options

- Digital Locking
- Sloping Top

See Page 74  
For Options

PC215

Drug & Medicine Cabinets - Monitored Dosage, Biodose® Trays

Features

- Independently tested to BS2881: 1989 (Security Level One) Specification for Cupboards for the Storage of Medicines in Health Care Premises
- BS3621 anti pick and drill, key retaining five pin cylinder lock (supplied with 3 keys)
- Runners for the storage of monitored dosage system trays (Biodose®)
- Key profile unique to Hospital Metalcraft Ltd, offering 250,000 differs per profile
- Compatible with ABLOY® CLIQ™ Remote, integrating electronics into high security mechanical disc cylinders and keys, combining electronic security and remote management in real time
- 12v DC LED lighting /warning system (model dependent) with volt-free contact to allow connection to light/nurse call systems, CE marked and conforms to the low voltage directives 73/23/EEC & 89/336/EC
- Lighting transformer casing adds 105mm to overall height (model dependent)
- 0.9mm mild steel welded construction
- Mounting holes provided in back (fixings not included)

Standard Colours

- Paint - White

BS 2881:1989



BS 3621



ABLOY PROTEC  
Remote ready. See page 75



Biodose® Trays Not Supplied



LED illuminates green when door is closed



LED illuminates red when door is open, flashes red when open for 2 ½ minutes

Dimensions (w x d x h)	Weight	Biodose Tray Capacity	Right Hand Opening		Left Hand Opening	
			With Light*	Without Light	With Light*	Without Light
311 x 387 x 750mm	21.9kg	15	MBC005	MBC010	MBC105	MBC110
554 x 387 x 750mm	33.9kg	30	MBC015	MBC020	MBC115	MBC120

\* Transformer casing adds 105mm to overall height of cabinet



### Mechanical Digital Lock

#### Features

- Push button mechanical digital lock
- Requires a five digit code to operate (set by customer)
- Cabinets fitted with this lock will not conform to BS2881: 1989 (Security Level One) Specification for Cupboards for the Storage of Medicines in Health Care Premises
- Factory fitted



### Sloping Top

#### Features

- Suitable for use with 300/500/600/800 & 1000mm wide cabinets
- Prevents items being stored on the top of the cabinet and assists cleaning
- Increases the overall height of the cabinet by 110mm
- Available factory fitted, or for fitting to existing units

#### Standard Colours

- Paint - White

Item	Description	Weight
PCST3	300mm Wide Cabinets	1.3kg
PCST5	500mm Wide Cabinets	1.5kg
PCST6	600mm Wide Cabinets	1.6kg
PCST8	800mm Wide Cabinets	1.8kg
PCST10	1000mm Wide Cabinets	2.0kg

Item	Description
2LOCK014	Push Button Mechanical Digital Lock



### Tablet Counter

#### Features

- Triangular stainless steel tablet counter
- Etched legend to interpret rows (max 22) into number of tablets

#### Overall Dimensions (w x d x h)

- 205 x 195 x 10mm

Item	Description	Weight
PE/30	Tablet Counter	0.15kg





## What is CLIQ™ Remote?

ABLOY® CLIQ™ Remote integrates electronics into mechanical cylinders and keys, providing a security solution that can be managed remotely.



## System Features

- Secure - Provides dual security through the patented ABLOY® PROTEC mechanical disc cylinders and keys along with DES encryption, a recognised electronic standard
- Cost Effective - Low installation & maintenance costs along with a long lifecycle (requires no wires or system updates, power for the cylinder is provided by the key)
- Easy Retrofit - CLIQ™ cylinders are designed to fit into Euro Profile mechanical lock cases
- Easily Programmable - Keys can be added quickly and programmed to specific time and date schedules
- Fully Auditable- Audit trails can be accessed from both the cylinder and the key
- Easily Accessible - The CLIQ™ environment works in a cloud hosted server farm, maintained and supported by Abloy allowing remote user access via a secure connection from anywhere in the world

## Wall Programming Device (Wall PD)

- Updates keys remotely (linking the server and users keys)
- High level data encryption
- Allows the use of recurring validation, forcing users to validate their keys at the start of their shift whilst automatically downloading audit trails which are relayed to the server



## KeyAxxess (Key Safe)

- Allows integration of a key safe into the CLIQ™ system to control the issuing of keys
- Keys are accessed using existing (or new) security cards or pin number technology
- Holds upto 32 un-programmed keys, each ready to be 'handed out' (reports on key activity are easily accessible from the system)



## Drug & Medicines - Security Solution

### Start of Shift



Nurse/member of staff places their key into the Wall PD to gain validation for their shift. If key transactions are present from the previous shift they will be automatically downloaded from the key and stored in the audit trail archive (server) prior to new authorisations being uploaded\*

### During Shift



The key will only open cabinets where access permissions have been granted. Each time the key is used in a cabinet fitted with an ABLOY® PROTEC cylinder an audit trail is created on both the key and cylinder

### End of Shift



Key is placed into the Wall PD. Previous key transactions are automatically downloaded from the key and stored in the audit trail archive (server)\*

In the event that the key is not placed into the Wall PD at the end of the shift, the audit trail is downloaded the next time the key is presented to the Wall PD. In the event that a key is lost, the lock cylinder can be interrogated by a programming key (the cylinder stores an audit trail of the last 1,000 key insertions)

Contact Our Sales Team For Your Demonstration

## Questions & Answers

### Q Is the system expensive to install?

A The system has a low installation & maintenance cost along with a long life cycle. CLIQ™ cylinders are designed to fit into Euro Profile mechanical lock cases. No wiring is required to the cabinet. The wall programming device requires an Ethernet connection and power through a 12-24V adapter or alternatively power over Ethernet

### Q Who maintains the system?

A System maintenance is normally assigned to a member of the hospital staff who will be responsible for programming/issuing of keys along with interrogation of audit trails

### Q Is it possible to access the system remotely?

A The CLIQ environment works in a cloud hosted server farm, maintained and supported by Abloy. Access from anywhere in the world is possible utilising secure encryption via the internet. Allowing users to remotely provide access rights and retrieve audits on the fly

### Q How long do the batteries last?

A The battery is located in the key, not the cylinder. Under normal usage a battery will operate up to 20,000 cycles or 2 years

### Q What happens if a key is lost?

A In the event that a key is lost this can be quickly removed from the system, if subsequently found this can be added back and re-issued. In the event that an audit trail is required for a lost key, lock cylinders can be interrogated using a programming key (each cylinder stores an audit trail of the last 1,000 key insertions)

### Q How can I better control the issuing of keys?

A Through the use of ABLOY® KEYAXCESS (Key Safe) keys can be automatically assigned to specific users. Keys are issued using either the staff members own security card or via pin number technology.

Contact our sales team for more information

\*1,800 events can be held within the key, following which the eldest are deleted

Misuse of Drugs Regulations



BS 3621



**ABLOY PROTEC**  
Remote ready. See page 75



MS005

## Controlled Drug Cabinets - Multi-Point Locking

### Features

- Exceeds the statutory requirement for the storage of controlled drugs, "The Misuse of Drugs (Safe Custody) Regulations 1973"
- Independently security tested by Sold Secure attaining "Silver Accreditation" based on a realistic evaluation of the attack resistance of Controlled Drug Cabinets
- BS3621 anti pick and drill, key retaining six pin cylinder lock (supplied with 2 working keys and an identity card)
- Multi-point locking, operated using a handle mounted on the door (independently tested)
- Key profile unique to Hospital Metalcraft Ltd, offering 250,000 differs per profile
- Compatible with ABLOY® CLIQ™ Remote, integrating electronics into high security mechanical disc cylinders and keys, combining electronic security and remote management in real time
- Lock protected by hardened steel plates and stainless steel escutcheon
- 3.0mm mild steel, seamless welded construction
- Mounting holes provided in back (fixings not included)
- Fixed shelf, (refer to table for models)

### Standard Colours

- Paint - White



MS010



MS015

Item	Description	Dimensions (w x d x h)	Shelves	Weight
MS005	Multi-Point Locking - Small	335 x 265 x 300mm	0	17.0kg
MS010	Multi-Point Locking - Medium	335 x 265 x 550mm	1	26.0kg
MS015	Multi-Point Locking - Large	500 x 300 x 550mm	1	37.0kg

## Controlled Drug Cabinets - Single Point Locking

### Features

- Exceeds the statutory requirement for the storage of controlled drugs, "The Misuse of Drugs (Safe Custody) Regulations 1973" (with the exception of CD040/CD045, CD050 & CD055)
- BS3621 anti pick and drill, key retaining six pin cylinder lock (supplied with 2 working keys and an identity card)
- Single-point locking
- Key profile unique to Hospital Metalcraft Ltd, offering 250,000 differs per profile
- Compatible with ABLOY® CLIQ™ Remote, integrating electronics into high security mechanical disc cylinders and keys, combining electronic security and remote management in real time
- Can be supplied with a micro-switch to allow connection to remote lighting /nurse call system by others (CD905), or supplied with a 12v DC lighting /warning system (CD910)
- 1.5mm mild steel, seamless welded construction
- Mounting holes provided in back (fixings not included)
- Adjustable & removable shelves (refer to table for details)
- Security of models CD005, CD010 & CD015 can be enhanced by concealing inside one of our 'Drug & Medicine Cabinets'
- Modular design allows for easy interchange with HTM 63 storage systems
- Supplied right hand hinging as standard, left hand available on request

### Standard Colours

- Paint - White

### Options

- CD905 - Micro-Switch (allows connection with volt free contact)\*\*\*
- CD910 - 12v DC LED Lighting /Warning System\*\*

Item	Dimensions (w x d x h)	Shelves	Shelf Size	Weight
CD005	210 x 270 x 300mm	1	197 x 190mm	8.0kg
CD010	335 x 270 x 300mm	1	322 x 190mm	9.0kg
CD015	335 x 270 x 550mm	2	295 x 210mm	17.0kg
CD020	500 x 300 x 550mm	2	460 x 240mm	20.0kg
CD025	500 x 300 x 850mm	3	460 x 240mm	37.0kg
CD030	500 x 450 x 850mm	3	460 x 390mm	42.0kg
CD035	500 x 450 x 1250mm	4	460 x 390mm	59.0kg
CD040*	500 x 300 x 1900mm	6	440 x 240mm	73.0kg
CD045*	500 x 450 x 1900mm	6	440 x 384mm	91.0kg
CD050**	500 x 450 x 1900mm	6	440 x 384mm	91.0kg
CD055**	500 x 300 x 1900mm	6	440 x 240mm	73.0kg

\*1900mm high models are fitted to a plinth \*\*Left hand opening \*\*\*Factory fitted

Misuse of Drugs  
Regulations



BS 3621



**ABLOY PROTEC**  
Remote ready. See page 75



CD005, CD015 & CD010



CD020, CD030 & CD025



CD035, CD045 & CD040

### CD910 - Optional 12v DC LED Lighting /Warning System

- Door activated micro-switch
- LED\* warning light illuminates
  - Green when closed
  - Red when open
  - Flashes red when open for 2 ½ minutes
- Volt-free contact to allow connection to an additional light /nurse call system

\*Externally mounted



CD010 with 12v DC  
Lighting /Warning  
System

## Drug &amp; Medicine Cupboards - Single Door, 870mm High



BU035

BS 2881:1989



BS 3621


**ABLOY PROTEC**  
Remote ready. See page 75


BU040



BU045

## Features

- Independently tested to BS2881: 1989 (Security Level One) Specification for Cupboards for the Storage of Medicines in Health Care Premises
- BS3621 anti pick and drill, key retaining five pin cylinder lock (supplied with 3 keys)
- Key profile unique to Hospital Metalcraft Ltd, offering 250,000 differs per profile
- Compatible with ABLOY® CLIQ™ Remote, integrating electronics into high security mechanical disc cylinders and keys, combining electronic security and remote management in real time
- Worksurface (removable to assist with positioning under existing worktops)
- 0.9mm mild steel welded construction
- Modular design allows for easy interchange with HTM 63 storage systems
- Available with plastic trays /shelves or shelves & dividers

## Plastic Trays

- Interchangeable with our popular CT range
- 3 x 100mm, 2 x 160mm Trays supplied per cupboard
- Internal tray dimensions 360 x 430mm (max load per tray 5kg)
- Each tray supplied with four removable dividers (2 x long, 2 x short) complete with a plastic clip on label cover
- Each cupboard is supplied with perforated coloured label strips (white, blue, green, yellow and red)

## Flat Shelves

- Down turned sides
- Adjustable at 50mm increments
- Capacity to hold 6 MDS frames
- 3 shelves per cupboard

## Shelves &amp; Dividers

- Down turned sides
- Adjustable at 50mm increments
- Supplied with dividers to assist with the segregation of drugs & medicines (adjustable at approx 25mm increments)
- 3 shelves & 12 dividers per cupboard

## Overall Dimensions (w x d x h)

- 510 x 536 x 867mm

## Standard Colours

- Paint - White
- Worksurface - Beech

## Options

- 2LOCK014 - Push Button Mechanical Digital Lock
- BU901 - Joining Kit & Full Width Worktop (connects cupboards)

Opening Right Hinged	Left Hinged	Description	Weight
BU035	BU050	Single Door, 870mm High, Plastic Trays	42.0kg
BU040	BU055	Single Door, 870mm High, Flat Shelves	37.0kg
BU045	BU060	Single Door, 870mm High, Shelves & Dividers	41.0kg

Drug & Medicine Cupboards - Single Door, 1850mm High

Features

- Independently tested to BS2881: 1989 (Security Level One) Specification for Cupboards for the Storage of Medicines in Health Care Premises
- BS3621 anti pick and drill, key retaining five pin cylinder lock (supplied with 3 keys)

- Key profile unique to Hospital Metalcraft Ltd, offering 250,000 differs per profile
- Compatible with ABLOY® CLIQ™ Remote, integrating electronics into high security mechanical disc cylinders and keys, combining electronic security and remote management in real time
- 0.9mm mild steel welded construction
- Modular design allows for easy interchange with HTM 63 storage systems
- Available with plastic trays /shelves or shelves & dividers

Plastic Trays

- Interchangeable with our popular CT range
- 7 x 100mm, 5 x 160mm Trays supplied per cupboard
- Internal tray dimensions 360 x 430mm (max load per tray 5kg)
- Each tray supplied with four removable dividers (2 x long, 2 x short) complete with a plastic clip on label cover
- Each cupboard is supplied with perforated coloured label strips (white, blue, green, yellow and red)

Flat Shelves

- Down turned sides
- Adjustable at 50mm increments
- Capacity to hold 6 MDS frames
- 8 shelves per cupboard

Shelves & Dividers

- Down turned sides
- Adjustable at 50mm increments
- Supplied with dividers to assist with the segregation of drugs & medicines (adjustable at approx 25mm increments)
- 8 shelves & 32 dividers per cupboard

Overall Dimensions (w x d x h)

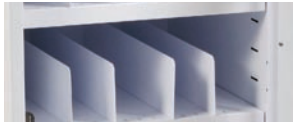
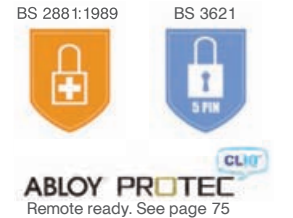
- 500 x 530 x 1850mm

Standard Colours

- Paint - White

Options

- 2LOCK014 - Push Button Mechanical Digital Lock
- BU902 - Joining Kit (connects cupboards)



Shelves / Dividers



Flat Shelves



Trays



BU140

Opening		Description	Weight
Right Hinged	Left Hinged		
BU125	BU140	Single Door, 1850mm High, Plastic Trays	77.0kg
BU130	BU145	Single Door, 1850mm High, Flat Shelves	68.0kg
BU135	BU150	Single Door, 1850mm High, Shelves & Dividers	78.0kg





SAC/313/S



SAC/213/S



SAC/413/S/MD

## Patients / Residents Own Medication Cabinets - Self Administration

### Features

- Designed specifically for patients / residents own medication and self administration schemes
- Available with a door pocket compatible with MDS cards & Nomad cassettes
- Side & bottom hinged doors
- Single-point locking using a CAM lock (supplied with 2 keys)
- 40 different master suites are available (for security we recommend that each ward operates a different master series - please contact our sales team for more information)
- Self adhesive name card holder (length 60mm)
- 0.9mm mild steel, welded construction
- Mounting holes in back / bottom (fixings not included)
- Shelves not included (optional)

### Options

- SAC/FS - Flat Removable Shelves
- SAC/BS - Bridge Shelf
- SAC/WP - Wall Plate
- SAC/LR - Lock Plate, Rear Mounting
- SAC/LT - Locker Plate, Top Mounting

### Standard Colours

- Paint - White

Item	Shelf Compatibility	Dimensions (w x d x h)	Weight
Side Hinged			
SAC/213/S	SAC/FS/2, SAC/BS	210 x 155 x 315mm	2.6kg
SAC/313/S	SAC/FS/3, SAC/BS	310 x 155 x 315mm	3.4kg
SAC/413/S	SAC/FS/4, SAC/BS	410 x 155 x 315mm	4.1kg
SAC/QMC/S	SAC/QMC/BS	315 x 110 x 245mm	2.3kg
Side Hinged, Door Pocket (MDS/Nomad)			
SAC/313/S/MD	SAC/FS/3, SAC/BS	310 x 155 x 315mm	3.6kg
SAC/413/S/MD	SAC/FS/4, SAC/BS	410 x 155 x 315mm	4.4kg
Bottom Hinged			
SAC/213/B	SAC/FS/2, SAC/BS	210 x 155 x 315mm	2.6kg
SAC/313/B	SAC/FS/3, SAC/BS	310 x 155 x 315mm	3.4kg
SAC/413/B	SAC/FS/4, SAC/BS	410 x 155 x 315mm	4.1kg
SAC/QMC/B	SAC/QMC/BS	315 x 110 x 245mm	2.3kg



Shelves

Features

- 100mm deep flat /bridge shelves
- Removable to assist cleaning

Standard Colours

- Paint - White

Item	Description	Weight
SAC/FS/2	Shelf - 200mm Wide Cabinets (SAC/213/S & SAC/213/B)	0.16kg
SAC/FS/3	Shelf - 300mm Wide Cabinets (SAC/313/S, SAC/313/B & SAC/313/S/MD)	0.23kg
SAC/FS/4	Shelf - 400mm Wide Cabinets (SAC/413/S, SAC/413/B & SAC/413/S/MD)	0.30kg
SAC/BS	Bridge Shelf - All cabinets except SAC/QMC/B & SAC/QMC/S	0.19kg



Mounting Plates

Features

- Compatible with all SAC cabinets using existing holes (fixings not provided)
- SAC/WP - Cabinet secured to wall plate using a small thumbscrew
- SAC/LR - Mounts to rear panel of a traditional bedside cabinet (requires minimum 120mm high panel for fixings)
- SAC/LT - Mounts to upper surface of traditional bedside cabinet

Standard Colours

- Paint - White

Item	Description	Overall Dimensions	Weight
SAC/WP	Mounting Plate - Wall	190 x 12 x 162mm	0.5kg
SAC/LR	Mounting Plate - Locker Rear	215 x 80 x 330mm	0.7kg
SAC/LT	Mounting Plate - Locker Top	190 x 150 x 150mm	0.9kg

## Patients / Residents Own Medication Cabinets - Monitored Dosage, MDS Frames

### Features

- Designed for use in residents rooms
- Suitable for the storage of MDS frames with dividers and name cards (max 100mm depth)
- Models available to hold one or two frames
- Single-point locking using a CAM lock (supplied with 2 keys)
- Mounting holes provided in back (fixings not included)
- Supplied with adjustable shelf / shelves
- Constructed from melamine faced MDF
- MDS frames not supplied

### Standard Colours

- Body / Door - Beech Woodgrain



SA045

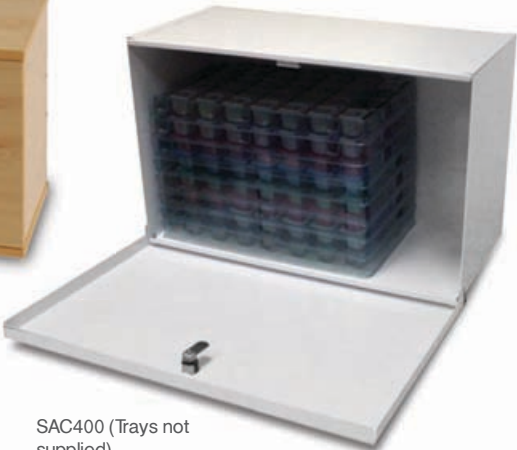


SA040

Item	Description	Dimensions (w x d x h)	Weight
SA040	Small - 1 x Frame Capacity	325 x 245 x 420mm	7.4kg
SA045	Large - 2 x Frame Capacity	325 x 245 x 775mm	12.0kg



SAC450



SAC400 (Trays not supplied)

Patients /Residents Own Medication Cabinets - Monitored Dosage, Biodose® Trays

Features

- Designed for use in residents rooms
- Suitable for the storage of Biodose® Trays
- Capacity for eight trays & two bottles\*
- Single-point locking using a CAM lock (supplied with 2 keys)
- Mounting holes provided in back (fixings not included)
- Constructed from metal or melamine faced MDF

\*Bottle 105mm diameter x 250mm high

Standard Colours

- SAC400 - White
- SAC450 - Beech Woodgrain

Item	Description	Dimensions (w x d x h)	Weight
SAC400	Metal, Bottom Hinged	480 x 240 x 315mm	5.0kg
SAC450	Wooden, Side Hinged	510 x 255 x 340mm	8.9kg



Storage Boxes - Lightweight

Features

- Lightweight aluminium riveted construction
- Fitted with handle
- Single-point locking using a CAM lock (supplied with 2 keys)

Standard Colours

- Paint - White

Item	Description	Dimensions (w x d x h)	Weight
SB / 221	Storage Box - Small	200 x 200 x 150mm	0.9kg
SB / 321	Storage Box - Medium	300 x 200 x 150mm	1.1kg
SB / 421	Storage Box - Large	400 x 200 x 150mm	1.4kg