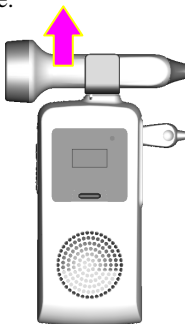


1 Probe Operation

Taking out the probe:

Hold the main unit with one hand. Pinch the probe and pull it outwards using mild force.



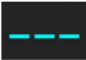
Placing the probe: Hold the main unit with one hand. Pinch the probe and align it with the probe holder. Push the probe inwards using mild force until it clicks in position.



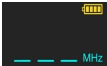
2 Switching on/ Off

Switching On:

Press the POWER button on the front panel to switch on the Doppler,

the OLED displays .

If the probe is not connected or poorly connected, the OLED displays

, You should reconnect the probe properly.

When the probe is well connected, the OLED shows the probe

frequency .

Switching Off:

Press the POWER button on the front panel to switch off the Doppler.

For SD3, SD3 PRO and SD3 PLUS, it switches off automatically if there is no input signal or no operation is performed for 60 seconds.

For SD3 PRO and SD3 PLUS, it switches off automatically if the probe is replaced in the probe holder.

3 Fetal Heart Examining

- (1) Confirm the fetus's position by hand and Determine the probable probe location for optimal FHR examining.
- (2) Take out the probe and switch on the Doppler.

- (3) Apply a certain amount of coupling gel to the probe faceplate and place the probe against the abdomen at the predetermined location. Move the probe around or tilt it until clear and rhythmic heart sound is heard from the headphone or speaker. At the same time, a numeric FHR is displayed on the OLED (except **SD3 LITE** and **SD3 VASCULAR**).

4 Replacing/Charging the Battery

(1) Replacing Alkaline Batteries

After taking out the old batteries, install them and dispose of them according to local regulations.

NOTE: Please do not charge the alkaline battery.

(2) Charge the NI-MH Batteries

Replace them with new batteries with identical specifications, or charge them with the provided charger.

WARNING : Make sure the batteries are not connected reversely before plugging the charger into the power socket.

(3) Charging the Doppler (SD3 PLUS, SD3 PRO)

Put the plug of the charger into the charge socket of the Doppler, and connect the charger to a power supply socket (100V-240V~, 50Hz/60Hz).

During charging, a battery sign appears on the OLED with

continuous changing energy sign. When the charging indicator shows full status, the battery finishes charging.

(4) Charging the Charge Stand

For the Doppler equipped with a charge stand, put the plug of the charger into the charge socket of the charge stand, and then connect the charger to a power supply socket (100V-240V~, 50Hz/60Hz).

NOTE: Please do not use the Doppler when you charge it.

5 Replacing the Probe

Remove the old probe:

Switch off the Doppler; hold the main unit with one hand and pinch the jacket of the mini USB socket. Lift the jacket up slightly and pull it out with mild force; take out the probe.

NOTE: Please do not pull the probe cable directly.

Replace it with a new probe:

Put the USB socket of new probe into the probe interface of the Doppler.

6 Vascular Examining (Optional)

4MHz, 5MHz or 8MHz vascular probes are to be connected to the Doppler to perform vascular examination.